

COMPANY  
INTRODUCTION 2024

# EMBRACE

## Company Introduction

Everywhere, Everytime,  
You can do it with Embrace!



# CONTENTS

## 01 Company Profile

- Company Overview
- Management Philosophy
- Organization
- Company Authorization
- History
- Financial Statement
- Business Area

## 02 Business Introduction

- Key Business
  - CDN
  - MEDIA
  - CLOUD
-

# EMBRACE

## Company Profile

# 01

---

Company Overview  
Management Philosophy  
Organization  
Company Authorization  
History  
Financial Statement  
Business Area

---

## 1-1. Company Overview



“ **Everywhere,  
Everytime,  
You can do it with Embrace!** ”

Embrace provide high-quality online video platform services.  
As partner, Listen to your valuable opinions and moving forward to rapidly changing video market.

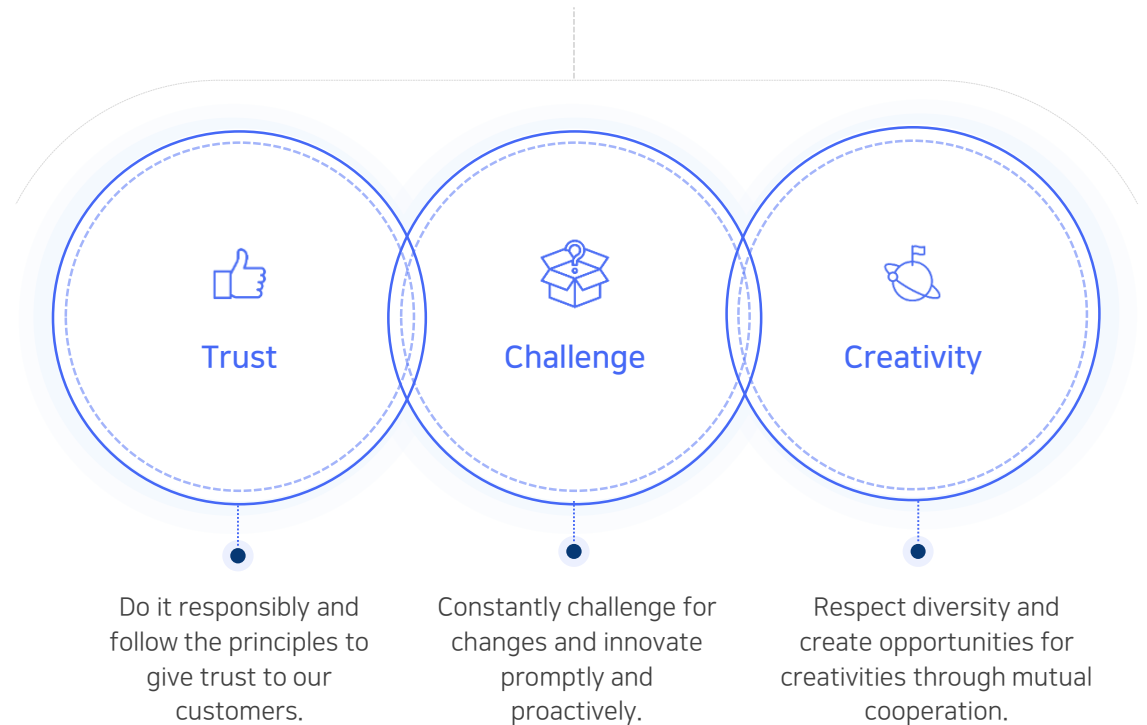
OVERVIEW	
Company Name	Embrace Inc.
CEO	Sungchae Park
Date of establishment	April, 2015
Location	4F, New Building, 57, Seonyudong 2-ro, Yeongdeungpo-gu, Seoul, Republic of Korea
Main Products	Software, Solution development and Sales, e-commerce business
number of employees	84 employees (Dec, 2023)
Revenue	7.9 billion (won)

## 1-2. Management Philosophy

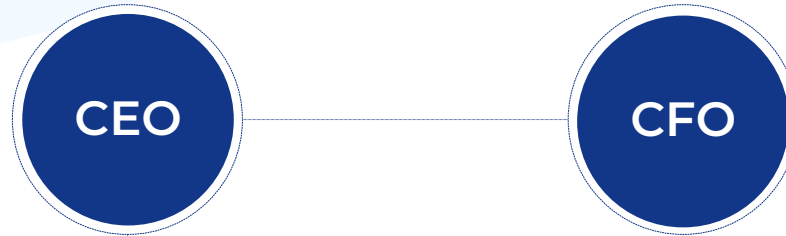


# EMBRACE

Make the future together with our customer through the core values.



# 1-3. Organization



**Sales Team**

Sales / Solution sales

**Management Supporting Team**

Finance / Human Resources / Accounting

**Development Group**

**Operation Group**

**Media Development Team**

Media solution development

**Platform Development Team**

Cache, Media Platform Development

**CDN Development Team**

CDN, Statistic Development, Agent Development.

**Operation Team**

Customer Counseling, System Management, Cache Platform Operation

**Cloud Team**

Cloud Operation & Counseling

**Media Center**

Media Monitoring, Commercial break Operation, Transmission Support

## 1-4. Company Authorization

**Seoul Hidden Champion Company**

Selected by the Seoul,  
as a model for creating jobs  
for youth and improving work-life  
balance culture

2021. 10. 1



SEOUL METROPOLITAN  
GOVERNMENT

**Youth-friendly Hidden  
Champion Company**

Selected as a youth-friendly  
small-and-medium-sized company  
by the Ministry of Employment and  
Labor in 2024 as an excellent growth  
with youth.

2024. 1. 1



Ministry of  
Employment and Labor

**Main-Biz  
small-and-medium-sized  
company**

Confirmed as  
Main-Biz small-and-medium-sized  
company by Main-Biz project.

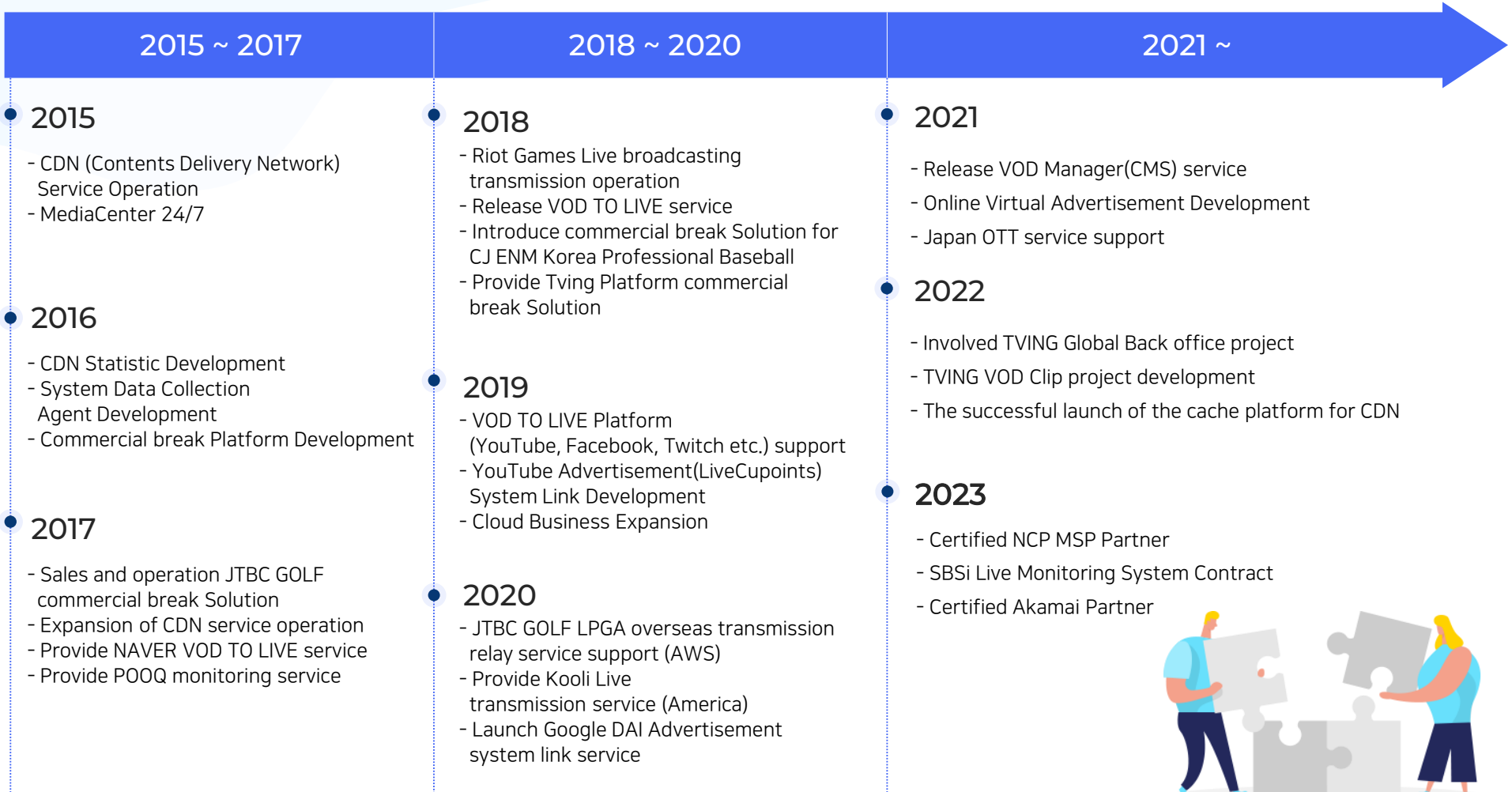
2021. 5. 28



Ministry of  
Employment and Labor

## 1-5. History

“ Growing together by listening to the voices of the best companies in each field in Korea. ”

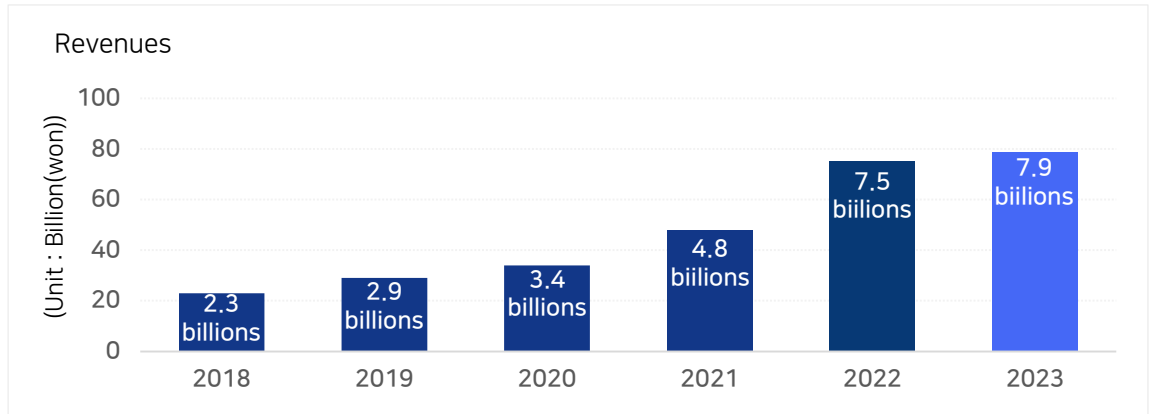




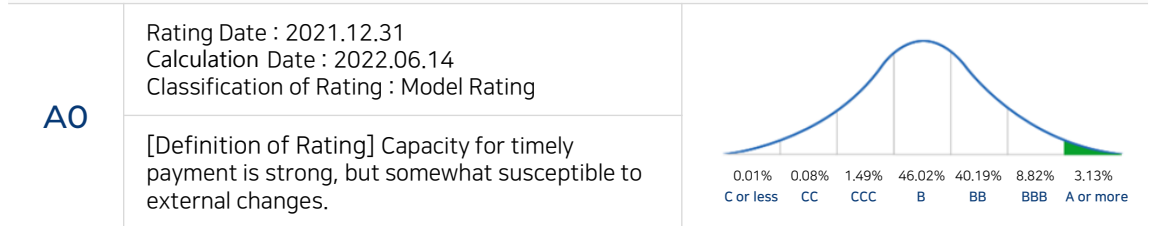
# 1-6. Financial Statement



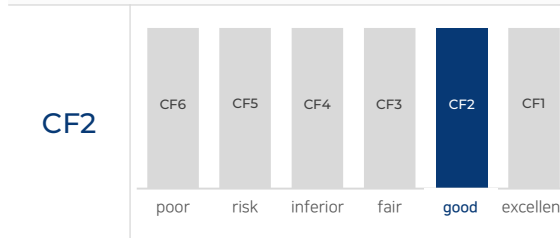
## Embrace Yearly Revenues



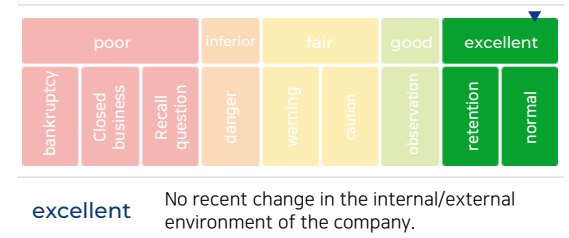
## Company Rating



## Cash Flow Rating



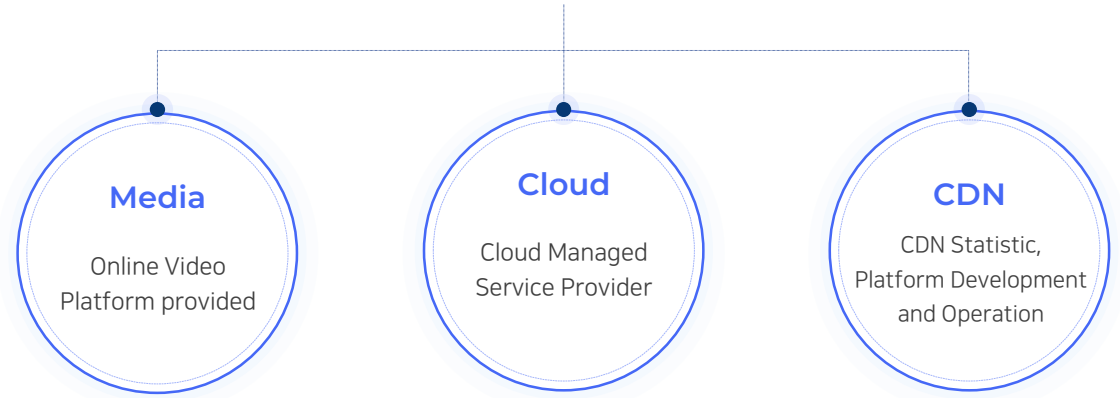
## Watch Rating – Rating Date : 2022.06.11



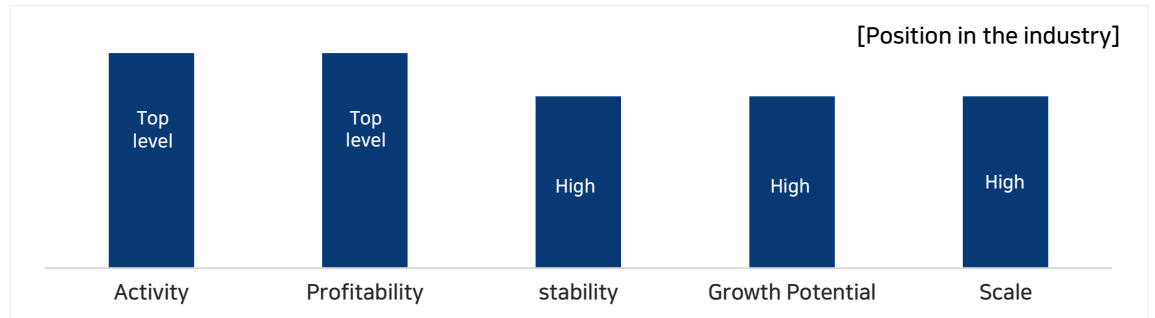
[data provided by NICE INFORMATION SERVICE]

# 1-7. Business Area

- Embrace Business Area



## Industry Status



[data provided by NICE INFORMATION SERVICE]



# EMBRACE

Business Introduction

# 02

---

Key Business

CDN

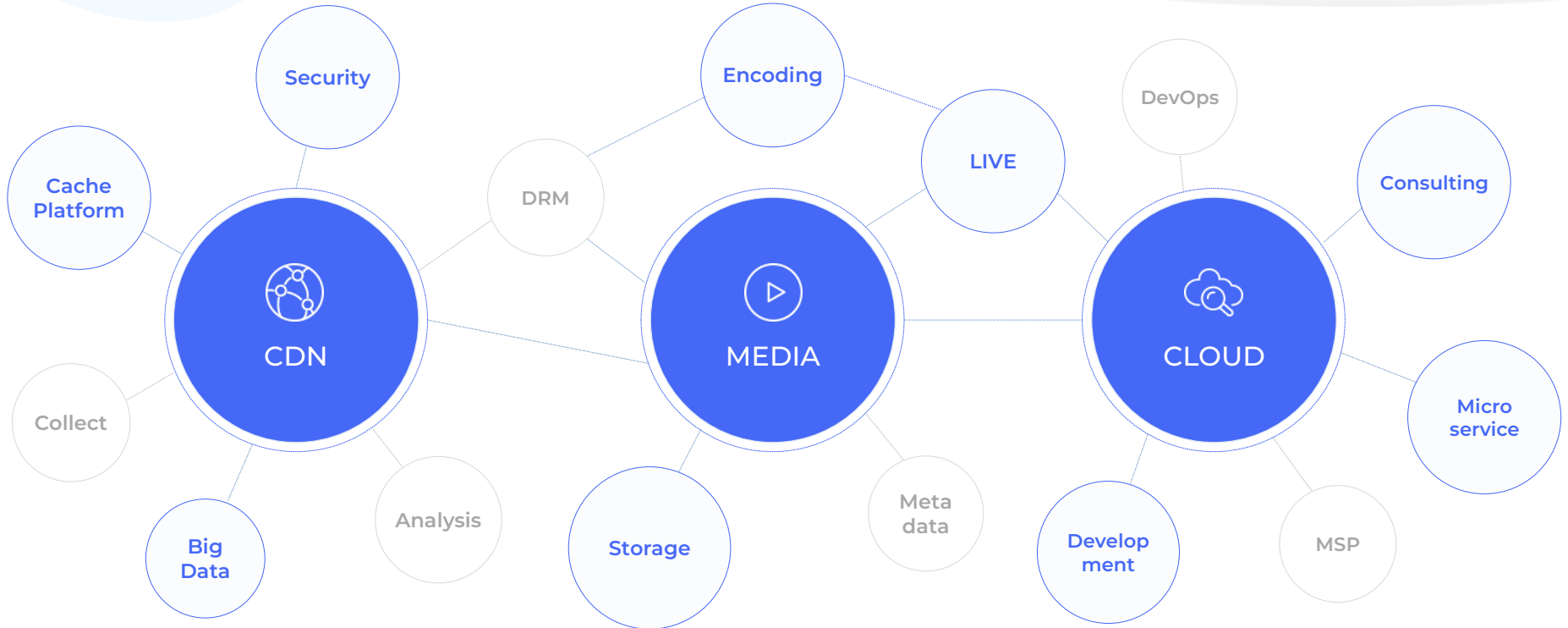
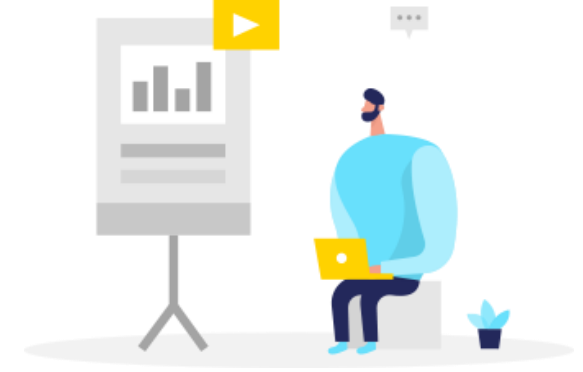
MEDIA

CLOUD

---

## 2-1. Key Business

Embrace with the advanced technologies of CDN, MEDIA, and CLOUD, is concentrating on enhancing IT technologies to provide differentiated value to customers for future of IT.

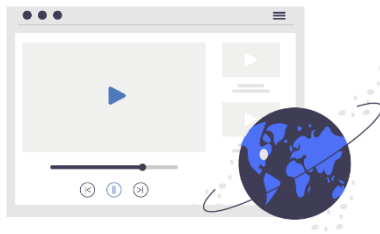


## 2-2. CDN (Contents Delivery Network)

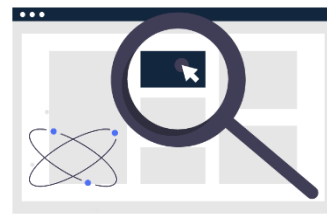
Content Delivery network is a technology that delivers content fastly and stably. It is a technology that distributes content, including web applications and streaming media, to optimally deliver it to users.



Embrace, in collaboration with GS Neotek, the No. 1 CDN provider in Korea, has been supporting the operation and consulting of CDNs for media, portals, shopping malls, games, and broadcasting companies.



[media]



[portals]



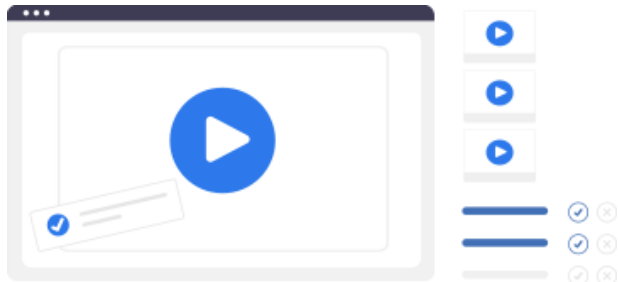
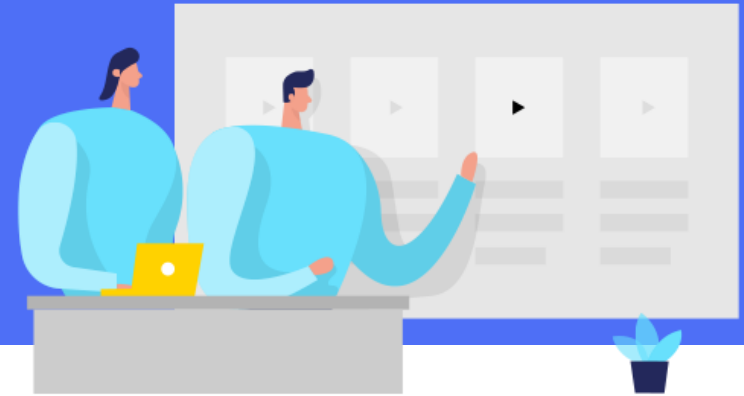
[shopping malls]



[games]

## 2-3. MEDIA

The media market is rapidly changing because new media moves to mobile channels due to the smartphones and video platforms such as V Live, TVING, Wavve, Youtube, and facebook are rapidly growing.



Provide online video platform which build VOD and LIVE services.  
TVING, Wavve, YouTube, and Google commercial break systems are linked to make a profit.

Customer in charge

**TVING**

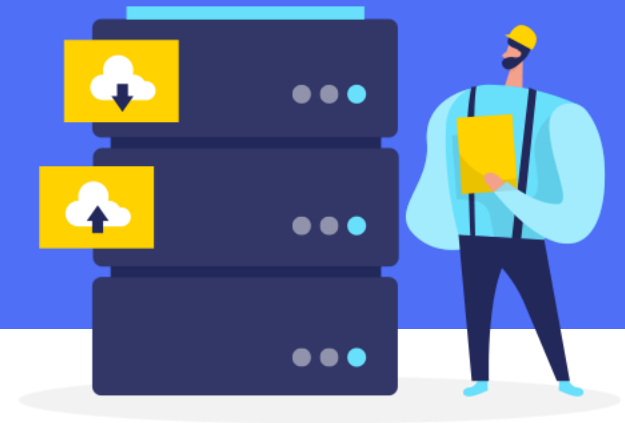


**jtbc GOLF**




**Kooli**

## 2-4. CLOUD

The cloud has made it easy to manage data centers around the world. Companies expect cost savings by using the cloud to pay only for what they use without infrastructure management in IDC.



### customer stories

	<p>In order to replace the satellite system, the LPGA broadcasting supported the transmission of 30 high-definition video from the US to Korea using the AWS global infrastructure.</p>
	<p>Kooli is a media company located in California, USA, which provides Korean broadcasting content to users in North America (USA, Canada). By providing set-top boxes to homes, support the fast and stable transmission of Domestic sourced content to provide seamless live and VOD services.</p>
	<p>Stream Media provides the entire process from content acquisition, storage, encoding, DRM packaging, and distributing Korean content to Japanese OTT service.</p>





# Thank You

Thank you for watching until the end.

## CONTACT US

Embrace Inc.

4F, New Building, 57, Seonyudong 2-ro,  
Yeongdeungpo-gu, Seoul, Republic of Korea

Tel : 02-6341-0725 / Fax : 02- 6341-0424

support@embracelabs.com